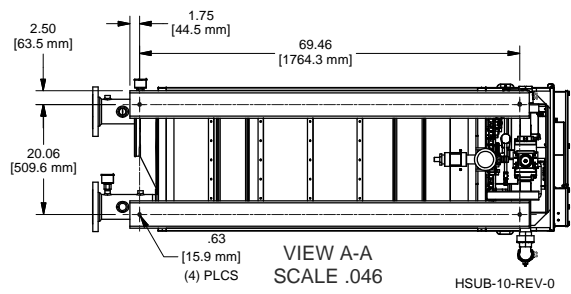
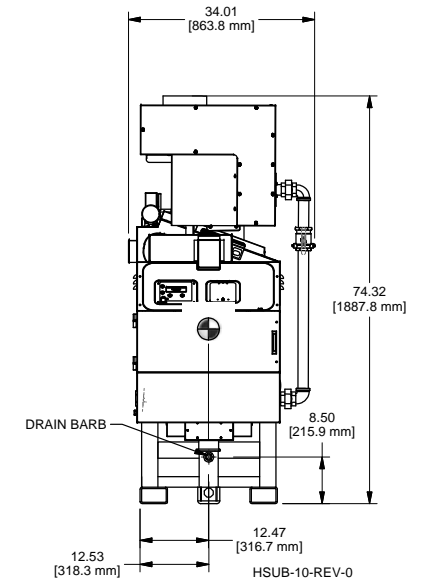
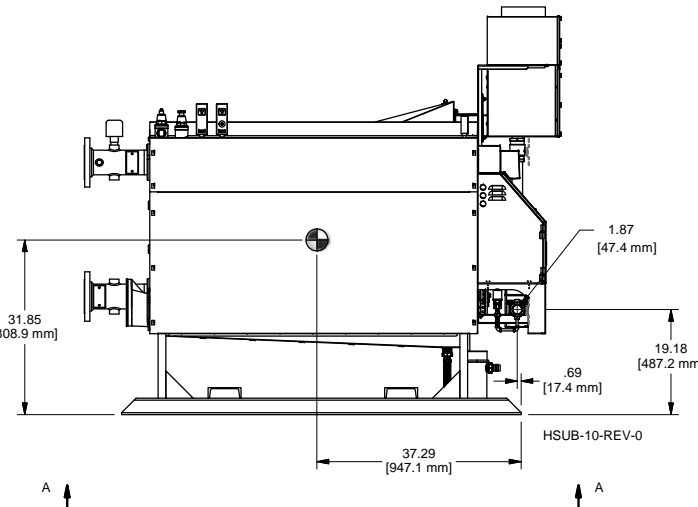
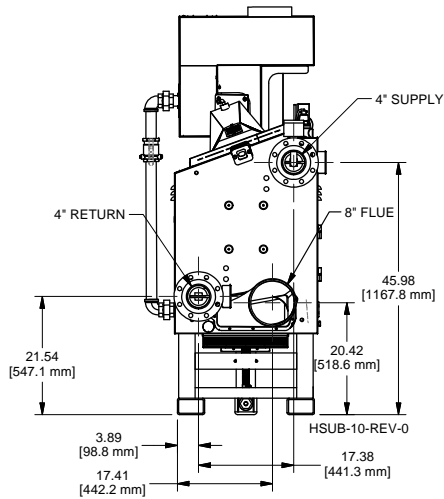
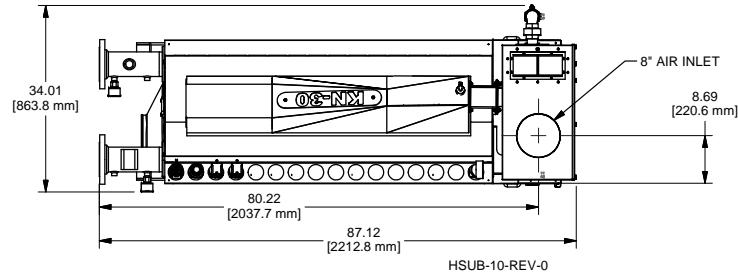


**CODE OPTIONS**

CSD-1	STANDARD
-------	----------

**NOTE:** Dimensions are approximate and should not be used to "rough-in" equipment.



⊙ CENTER OF GRAVITY

REP FIRM \_\_\_\_\_  
 SUBMITTED BY \_\_\_\_\_  
 JOB NAME \_\_\_\_\_  
 ARCHITECT \_\_\_\_\_  
 ENGINEER \_\_\_\_\_  
 CONTRACTOR \_\_\_\_\_  
 DATE \_\_\_\_\_

**KN-30**

**Category II or Category IV Appliance**  
(see Installation and Operation Manual for venting information)

**HydroTherm**  
A Product of  
**ADVANCED THERMAL HYDRONICS**  
A Division of Mestek, Inc.  
Westfield, MA 01085  
(413) 564-5515

### A.G.A. CERTIFIED RATINGS & CAPACITIES

<b>Fuel Type</b>	Natural/LP Gas	<b>Boiler FLA</b>	6.5 AMPS
<b>Input BTU/hr.</b>	3000 MBH/ 879 KW	<b>Min. Gas Pressure Required</b>	3" W.C.
<b>Output BTU/hr.</b>	2781 MBH/ 815 KW	<b>Max. Gas Pressure Allowed</b>	14" W.C.
<b>Boiler HP</b>	89.62	<b>Water Volume</b>	38 gal.
<b>Electrical Requirements</b>	240V 3Ø 60hz	<b>Operating Weight</b>	3500 lbs. / 1588 kg.

### BOILER TRIM & CONTROLS

<b>Main Gas Valve</b>	Dungs MBC	<b>Manual Pilot Valve</b>	Honeywell V8046C
<b>Firing Valve</b>	1 1/2" Apollo	<b>Air Switch</b>	Huba Type 605
<b>Ignition Control</b>	Honeywell RM7800	<b>Blower Motor</b>	Ametek
<b>Operating Control (FB/FW)</b>	HeatNet™	<b>L.W.C.O.</b>	750P-MT-120
<b>High Limit</b>	Honeywell L4006E	<b>Relief Valve - FW</b>	30, 50, 75 & 100 PSI
<b>Main Ball Valve</b>	1 1/2" Apollo	<b>Variable Speed Drive</b>	None
<b>Pilot Cock</b>	1/4" Conbraco	<b>Pilot Regulator</b>	MAXITROL RV12LT

### TEMPERATURE RISE / PRESSURE DROP (Based on Full Input)

20° F / 11.1° C		40° F / 22.2° C		60° F / 33.3° C		80° F / 44.4° C		100° F / 55.5° C			
Flow Rate	Pressure Drop	Flow Rate	Pressure Drop	Flow Rate	Pressure Drop	Flow Rate	Pressure Drop	Flow Rate	Pressure Drop		
GPM	L/s	Ft	kPa	GPM	L/s	Ft	kPa	GPM	L/s	Ft	kPa
278	17.54	2.31	6.9	139	8.77	.58	1.73	92.7	5.85	.25	.75
		69.5	4.38	.15	.45	55.6	3.51	.09	.27		

Flow GPM		Temp. Rise (° F)		Vent Length (Equiv. Ft.)		Air Inlet Length (Equiv. Ft.)	
Min	Max	Min	Max	Min	Max	Min	Max
30*	300	20	100	6	120	0	120

\* At 100% input

### A.S.M.E.

<b>ASME Sect IV Htg Surface</b>	100.96 Sq. Ft. / 9.38 Sq. M.	<b>Design Data</b>	100 PSI & + 250° F
<b>CV. GPM (1PSID)</b>	278		

### UNBALANCED FLUE LIMITATIONS

<b>Negative Flue Pressure</b>	- .2" W.C.
<b>Positive Flue Pressure</b>	+ .9" W.C.