

File Extraction

To begin the installation, run the “HeatNet USB Drivers 1.0 Setup.exe” file. The WinZip Self-Extractor Dialog will open as shown in Figure 1.

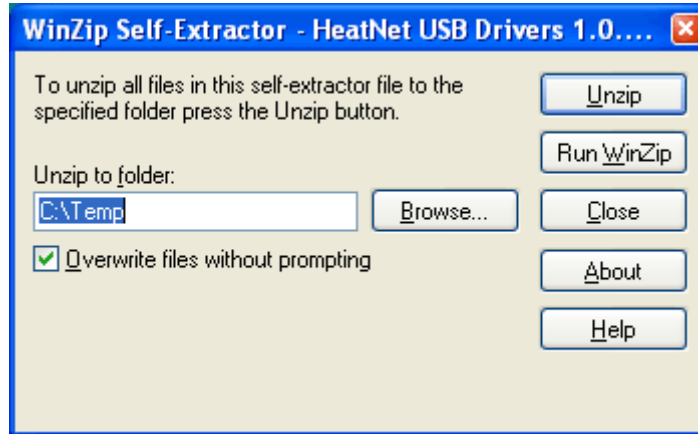


Figure 1. WinZip Self-Extractor Dialog

Press “Browse” to select the extraction location and selected “Desktop” as shown in Figure 2. Press “OK” to continue. The files will be extracted to a new folder on your desktop.

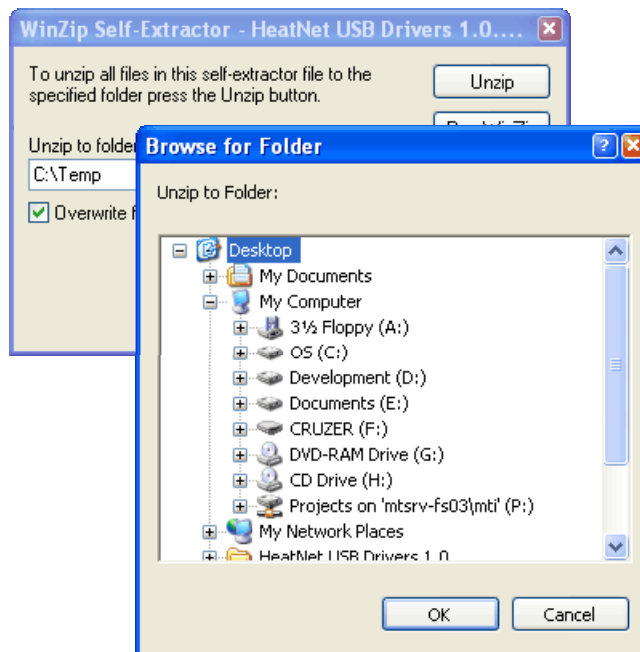


Figure 2. WinZip - Selecting Extract Location

Driver Installation

Windows XP and Windows 2000

STEP 1. To install the USB drivers, run setup.exe (see Figure 3), located in the “HeatNet USB Drivers 1.0” on your Desktop. This folder was created during the WinZip extraction in the previous section.

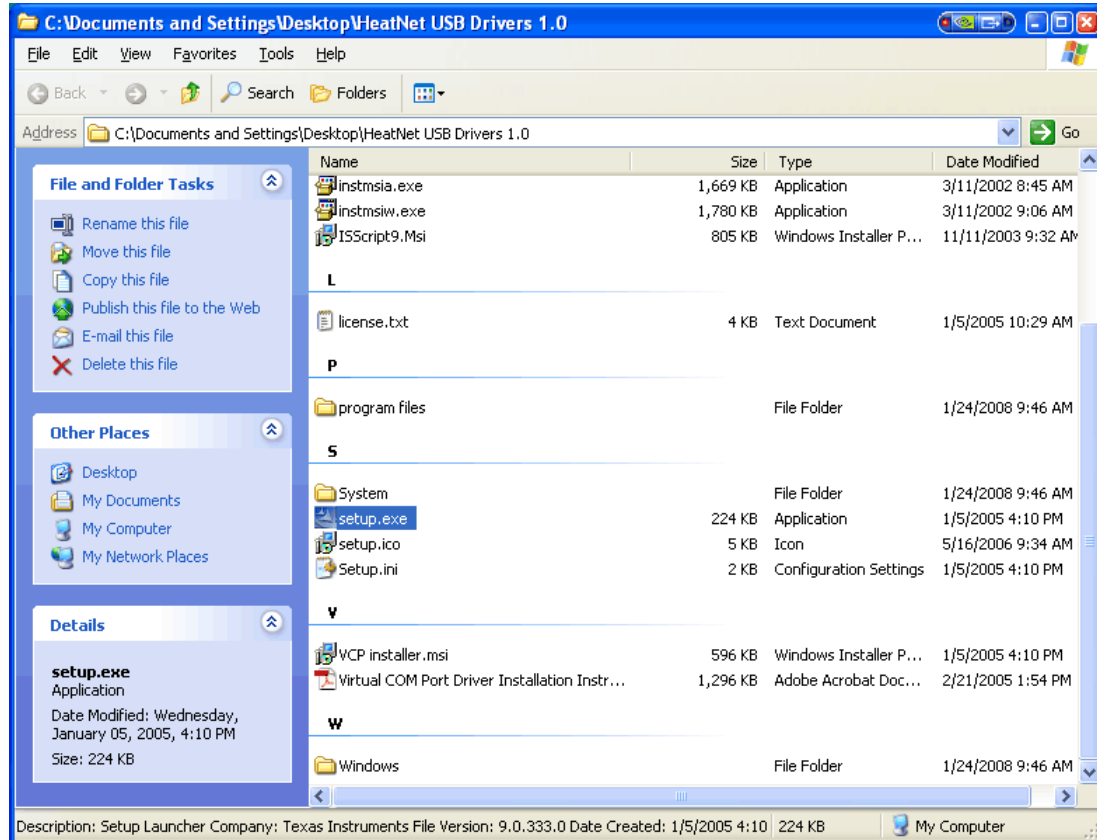


Figure 3. Running Driver Setup

This will install all the necessary files in the default directory C:\Program Files\Texas Instruments. The progress is shown by the following window

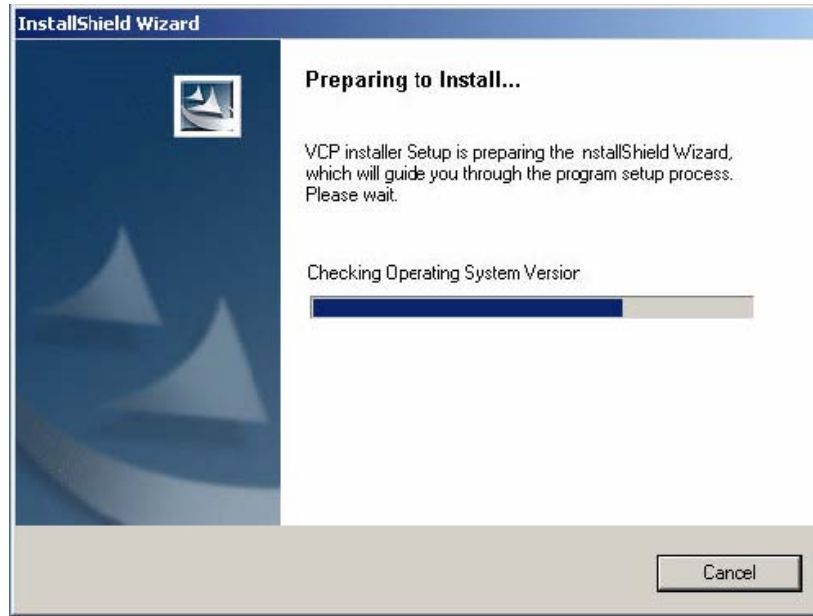


Figure 4. Driver Installation Progress

When the License Agreement Dialog appears (Figure 5), choose “accept” and choose “Next” to continue.



Figure 5. License agreement

Although the drivers have not been certified by Microsoft WHQL, TI testing has shown that they pass the HCT test suite used by the WHQL labs. TI plans to obtain official certification in 2Q2005. Because the drivers are not yet certified, the software installation warnings shown in Figure 6 and Figure 7 are generated. Two separate warnings are generated because the driver is composed of two separate modules, one for the USB functionality and one for the serial port. Choose “Continue Anyway” to install the drivers.



Figure 6. Installation Warning (first of two warnings)



Figure 7. Installation Warning (second of two warnings)

Click "Finish" as shown in Figure 8 to complete pre-installation of the drivers.

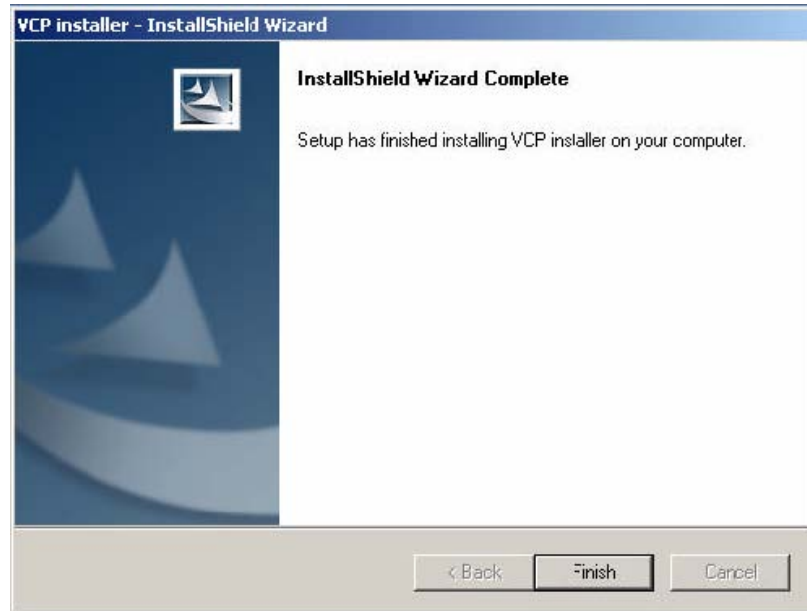


Figure 8. Pre-installation of drivers complete.

STEP 2. Connect the USB-to-serial hardware to the PC. Windows displays the Found New Hardware dialog box. You may be asked if you want Windows Update to search for software as shown in Figure 9. Choose “No, not this time” and press “Next” to continue.



Figure 9. Found New Hardware - Search for software.

Select the “Install the software automatically” option and click on “Next” as shown in Figure 10.



Figure 10. Found New Hardware – Install Automatically

Once again, choose “Continue Anyway” to install the drivers.



Figure 11. Hardware Installation Warning

Click on “Finish” to complete the installation of the device as shown in Figure 12 below.



Figure 12. Device installation complete.

STEP 3: Windows displays the Found New Hardware dialog box. You may be asked if you want Windows Update to search for software as shown in Figure 13. Choose “No, not this time” and press “Next” to continue.



Figure 13. New Hardware Wizard – Search for Software

Select the “Install the software automatically” option and click on “Next” as shown in Figure 14.



Figure 14. New Hardware Wizard – Install Automatically

Once again, choose “Continue Anyway” to install the drivers.



Figure 15. Hardware Installation Warning (USB-Serial Port)

Click “Finish” to complete the installation of the USB-Serial port device as shown in Figure 16 below.

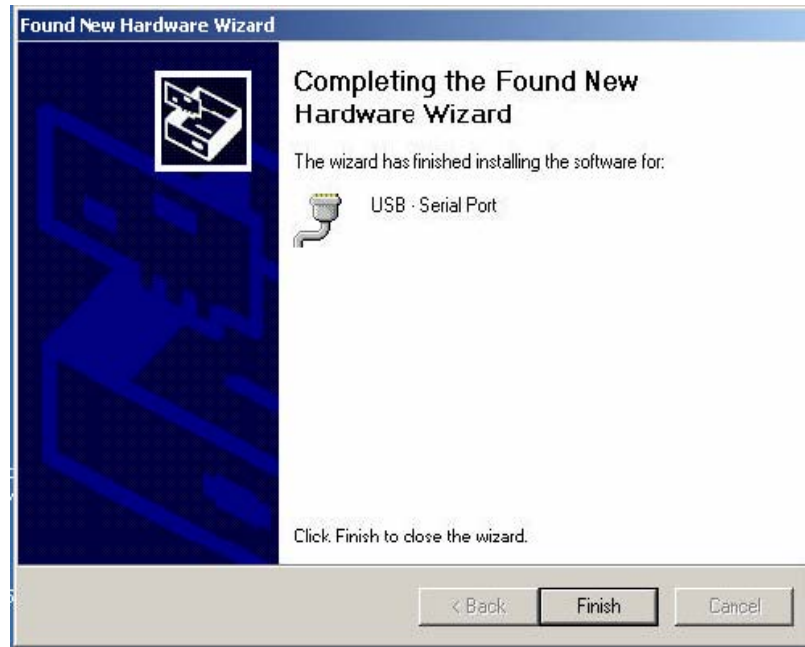


Figure 16. USB-Serial port installation complete.

To verify a successful installation, open the device manager by choosing “My Computer->Properties ->Hardware->Device Manager”. The device manager display for a successful installation is shown in the Figure 12 below. Depending upon your particular computer configuration, the USB serial port may be installed to a port other than COM3.

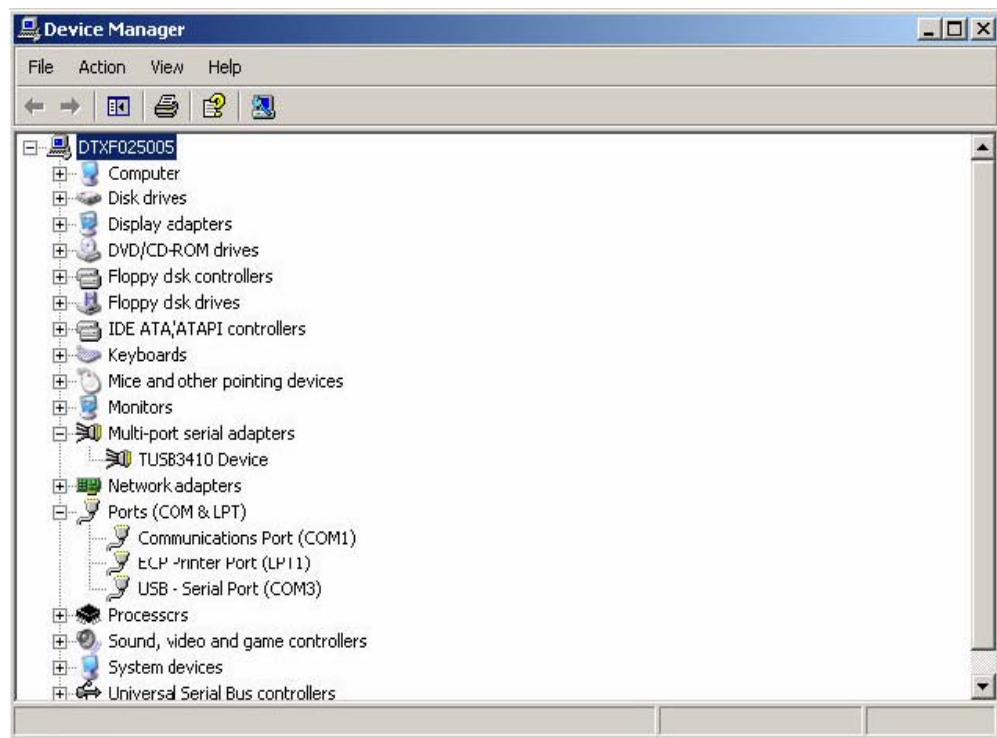


Figure 17. Windows 2K/XP Device Manager