

**LAWLER**



**SERIES 61** (PAT NO. 5011074)

## **THERMOSTATIC WATER MIXER**

**CONTROLLED OUTLET TEMPERATURE FOR SMALL CAPACITY APPLICATIONS**

**Rated Flow 1/2 to 25 GPM**



**ASSE 1017 Approved**



**Certified to CSA B125.3**

**LAWLER MANUFACTURING CO. INC., Indianapolis, IN**

# LAWLER SERIES 61

**Controlled outlet temperature for small capacity applications.**  
**The Selection when 3-way protection is needed at Low Flow**\_\_\_\_\_

Many commercial and industrial specifiers continually face the problem of applications which require tempered water to be supplied with three-way protection at low flow rates. Previously this protection has only been available in master controllers much too large to provide satisfactory control at these reduced flows.

## **LAWLER'S SERIES 61 VALVES ADDRESS THESE APPLICATIONS**

The Series 61's patented backseat design allows the safety and performance of a master controller to be packaged in a small valve with the ability to accurately regulate low flows. With the Series 61 it is no longer necessary to specify a valve which is much too large or a small valve with less than full three-way protection.

## **THE RIGHT CHOICE IS LAWLER'S SERIES 61**

Lawler's Series 61 will provide the reliability and safety of a master controller at a low flow rate. Series 61 valves will accurately regulate outlet temperature for volumes from 1/2 GPM to 25 GPM.

## **THREE-WAY PROTECTION IS PROVIDED BY LAWLER'S PATENTED BACKSEAT**

1. Thermostat Protection.  
Lawler's exclusive design cuts water flow if the thermostat's liquid motor fails.
2. Hot Supply Protection.  
Responds automatically if the hot water supply is interrupted, or if the temperature changes.
3. Cold Supply Protection.  
Guards against scalding if the cold water supply is interrupted.

Lawler Thermostatic Valves adjust for changes in both input temperature and pressure, maintaining constant output.

**When safety is important, specify Lawler.**

## **WHERE**

- Individual or Dual Showers
- Barrier Free Facilities
- "Hands Off" Wash Basins
- Metered Wash Basins
- Hydrotherapy Equipment
- Industrial Processes
- Laboratory Processes
- Not to be used on Emergency Shower Fixtures

## **HIGH PERFORMANCE FEATURES**

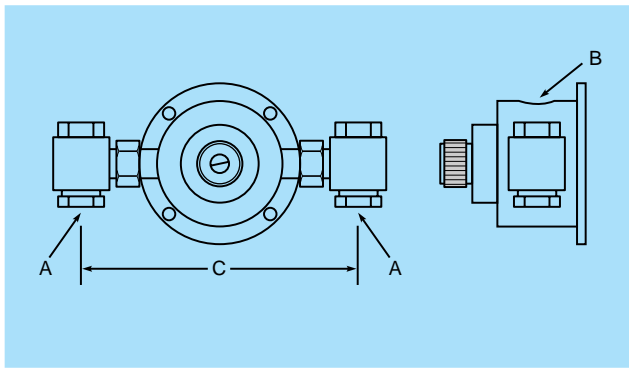
- Built with a powerful liquid thermal motor.
- Includes Lawler's patented backseat.
- Compensates for supply line temperature and pressure changes.
- Outlet flow is greatly reduced upon supply line or liquid motor failure.
- Inlets are fully rotatable through 360°.
- Tamper-resistant control adjustment.
- Rugged design equipped with stainless steel piston and liner.
- Easy maintenance valve can be completely repaired without being removed from the system.
- Standard finishes in rough bronze or highly polished chrome.
- Integral mounting flange cast in the body.

## **NON-STANDARD ASSEMBLIES**

Although the Lawler series 61 valves and piped assemblies are designed to meet most requirements, special adaptations are sometimes required.

Examples of alterations available are: non standard temperature ranges and set points; custom piped assemblies; corrosion resistant coatings; extra low flow assemblies.

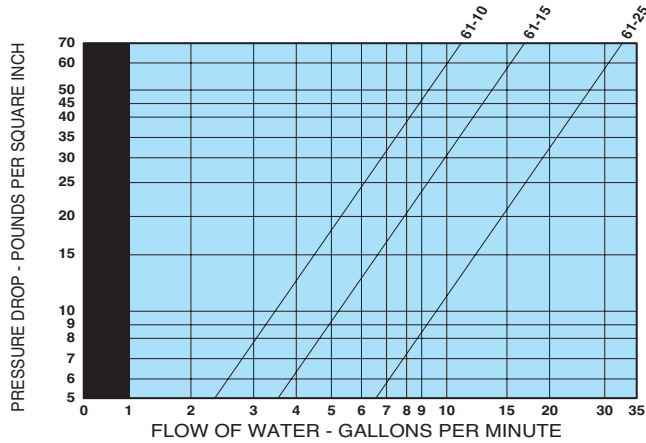
Please contact the factory for special configurations.



### DIMENSIONS:

Valve No.	A N.P.T.	B N.P.T.	C
61-10	1/2"	1/2"	8 1/2"
61-15	1/2"	1/2"	8 1/2"
61-25	3/4"	3/4"	8 5/8"

### CAPACITY OF TYPE 61 THERMOSTATIC MIXING VALVE



■ MINIMUM FLOW RATE

### CAPACITIES - SERIES 61

Pressure Drop PSI	5	10	20	30	45	60
Valve Number	Capacity-GPM					
61-10	2.5	3.5	5.5	8.0	10	12
61-15	3.5	5.5	8.5	11	15	18
61-25	6.0	10	14	18	25	30

### CAPACITIES - LMP SERIES 61

Pressure Drop PSI	5	10	20	30	45	60
Valve Number	Capacity-LPM					
61-10	9.4	13.2	22.8	30.3	37.8	45.4
61-15	13.2	20.8	32	41.6	56.7	68
61-25	22.7	37.8	53	68	94.6	113

### Maximum Inlet Conditions

Pressure: 125 psig  
Temperature: 200°F

### Recommended Conditions

#### Minimum Flow

1 Gallon Per Minute for 61-25  
1/2 Gallon Per Minute for 61-10 & 61-15

#### Minimum Temperature Differential

Hot and cold water inlets must have a minimum 20°F differential from the outlet set temperature.

### Performance

The Series 61 will maintain outlet temperature under any of the following conditions, providing the recommended minimum flow and minimum supply temperature differentials are not exceeded:

- reduction to minimum flow (1 or 1/2 GPM)
- 30°F change in hot water temperature
- 30°F change in cold water temperature
- 30% drop in inlet supply pressure

### TYPICAL SPECIFICATION

Thermostatic mixing valve shall be of the thermostatic type with liquid filled motor. In the event of interruption of the hot or cold water supply or thermostat failure, the valve shall be designed to cut flow by use of a sliding piston control mechanism with reverse seat closure. Valve construction shall have bronze body and stainless steel piston liner. Valve shall include union angle stop and check valves with removable strainers on each inlet.

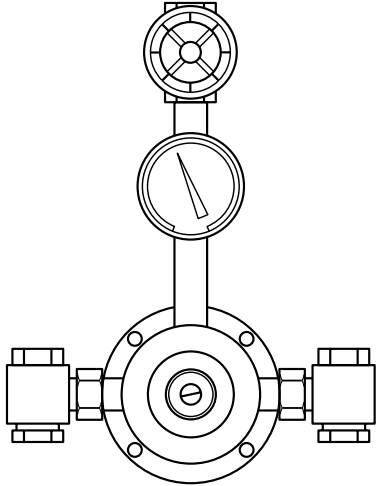
### FINISH

- Plain Bronze
- Polished Chrome Plate
- Nickel Coating
- Other

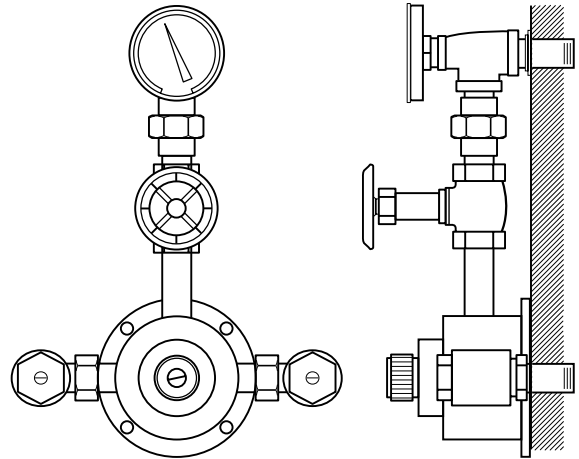
### TEMP. RANGE      SET POINT

- 50° to 100°F      80°F
- 85° to 135°F      110°F
- 100° to 150°F      130°F
- Special \_\_\_\_\_      \_\_\_\_\_

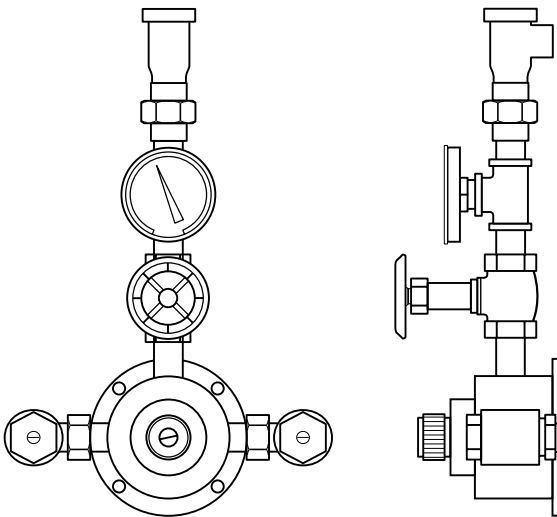
**Unit No. 84008**



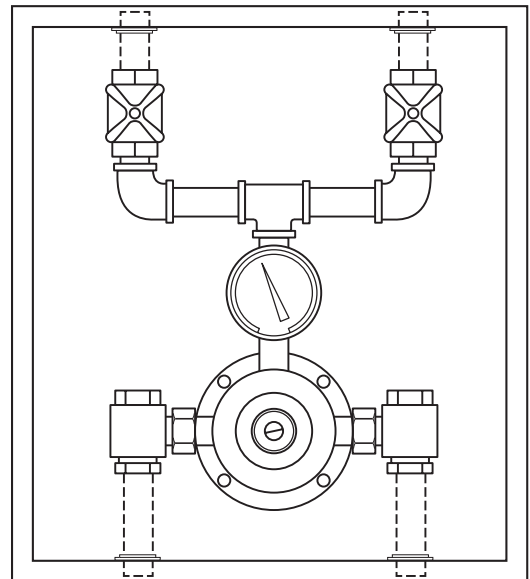
**Unit No. 84009**



**Unit No. 84010**



**Unit No. 84011**



**PACKAGED PIPED AND CABINET ASSEMBLIES**

**Consult the factory or our representative in your area for a complete package of specification sheets.**



**MANUFACTURING CO., INC.**

5330 East 25th Street  
Indianapolis, Indiana 46218  
Phone (317) 261-1212  
Fax (317) 261-1208

[www.lawlervalve.com](http://www.lawlervalve.com)