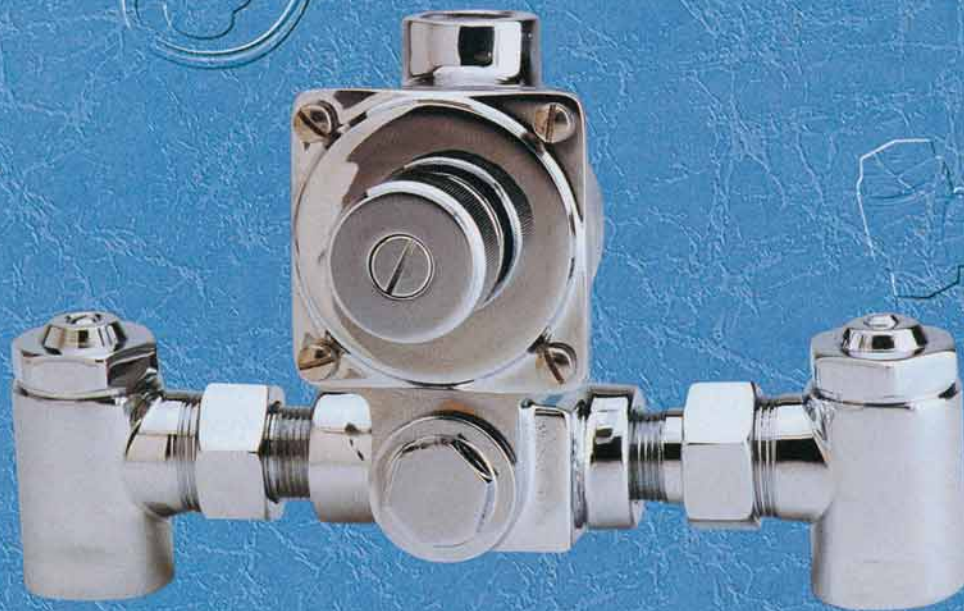


LAWLER



SERIES 67 (PAT NO. 5,011,074)

**COMBINATION THERMOSTATIC and
PRESSURE BALANCED WATER MIXER**

**CONTROLLED OUTLET TEMPERATURE FOR SMALL
CAPACITY APPLICATIONS**

Rated Flow 1/2 to 25 GPM Type T/P

LAWLER MANUFACTURING CO. INC., Indianapolis, IN

LAWLER SERIES 67

Controlled outlet temperature for small capacity applications.
The Selection when 3-way protection is needed at Low Flow_____

Many commercial and industrial specifiers continually face the problem of applications which require tempered water to be supplied with three-way protection at low flow rates. Previously this protection has only been available in master controllers much too large to provide satisfactory control at these reduced flows.

LAWLER'S SERIES 67 VALVES ADDRESS THESE APPLICATIONS

The Series 67's patented backseat design allows the safety and performance of a master controller to be packaged in a small valve with the ability to accurately regulate low flows. With the Series 67, it is no longer necessary to specify a valve which is much too large or a small valve with less than full three-way protection.

THE RIGHT CHOICE IS LAWLER'S SERIES 67

When you need the reliability and safety of a master controller at a low flow rate, Series 67 valves will accurately regulate outlet temperature for volumes from 1/2 GPM to 25 GPM.

THREE-WAY PROTECTION IS PROVIDED WITH LAWLER'S PATENTED BACKSEAT

1. Thermostat Protection.
Lawler's exclusive design cuts water flow if the thermostat's liquid motor fails.
2. Hot Supply Protection.
Responds automatically if the hot water supply is interrupted, or if the temperature changes.
3. Cold Supply Protection.
Guards against scalding if the cold water supply is interrupted.

Lawler Thermostatic Valves adjust for changes in both input temperature and pressure, maintaining constant output.

When safety is important, specify Lawler.

WHERE

- Individual or Dual Showers
- Barrier Free Facilities
- "Hands Off" Wash Basins
- Metered Wash basins
- Hydrotherapy Equipment
- Industrial Processes
- Laboratory Processes
- Anywhere Precisely Controlled Water is Required

HIGH PERFORMANCE FEATURES

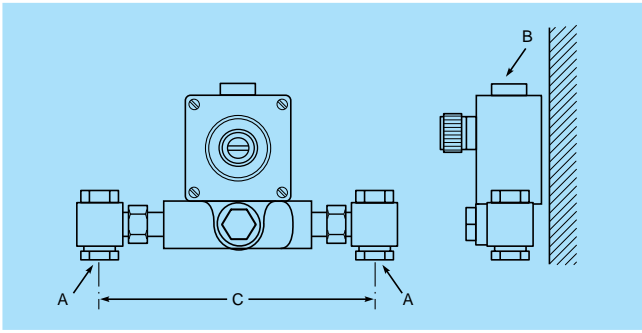
- Built with a powerful liquid thermal motor.
- Includes Lawler's patented backseat.
- Includes independent pressure balance section.
- Compensates for supply line temperature and pressure changes.
- Outlet flow is greatly reduced upon supply line or liquid motor failure.
- Inlets are fully rotatable through 360°.
- Tamper-resistant control adjustment.
- Rugged design equipped with stainless steel piston and liner.
- Easy maintenance valve can be completely repaired without being removed from the system.
- Standard finishes in rough bronze or highly polished chrome.
- Integral mounting flange cast in the body.

NON-STANDARD ASSEMBLIES

Although the LAWLER SERIES 67 valves and piped assemblies are designed to meet most requirements, special adaptations are sometimes required.

Examples of alterations available are: non standard temperature ranges and set points, custom piped assemblies, corrosion resistant coatings and extra low flow assemblies.

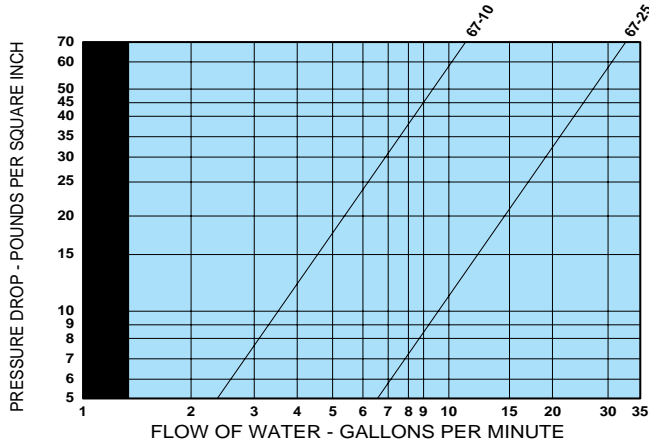
Please contact the factory for special configurations.



DIMENSIONS:

Valve No.	A N.P.T.	B N.P.T.	C
67-10	1/2"	1/2"	8"
67-25	3/4"	3/4"	8 3/8"

**CAPACITY OF TYPE 67
THERMOSTATIC & PRESSURE BALANCE MIXING VALVE**



■ MINIMUM FLOW RATE

Max. Inlet Conditions

Pressure: 125 psig
Temperature: 200°F

Recommended Conditions

Minimum Flow

1 Gallon Per Minute for 6725
1/2 Gallon Per Minute for 6710

Minimum Temperature Differential

Hot and cold water inlets must have a minimum 20°F differential from the outlet set temperature.

Performance

The Series 67 will maintain outlet temperature to within 1 1/2°F under any of the following conditions, providing the recommended minimum flow and minimum supply temperature differentials are not exceeded:

- reduction to minimum flow (1 or 1/2 GPM)
- 30°F change in hot water temperature
- 30°F change in cold water temperature
- 30% drop in inlet supply pressure

CAPACITIES – SERIES 67

Pressure Drop PSI	5	10	20	30	45	60	80
Valve Number	Capacity-GPM						
67-10	2.5	3.5	5.5	8.0	10	12	14
67-25	6	10	14	18	25	30	34

CAPACITIES – SERIES 67

Pressure Drop PSI	5	10	20	30	45	60	80
Valve Number	Capacity-LPM						
67-10	9.5	13	21	30	38	45.5	53
67-25	22.5	38	53	68	94.5	113	128

TYPICAL SPECIFICATION

Exposed valve shall be a combination thermostatic and pressure balanced mixing valve, with a liquid filled motor. In the event of interruption of hot or cold water supply or thermostat failure, the valve shall be designed to restrict flow by use of a sliding piston control mechanism with a reverse seat closure. The valve shall maintain output temperature for changes in inlet pressure and temperature. Valve construction shall have bronze body and stainless steel piston and liner. Mixing valve shall include a union end stop and check valve with removable strainer on each inlet.

FINISH

- Plain Bronze
- Chrome Plate
- Nickel Coating
- Other

TEMP. RANGE SET POINT

- 50° to 100°F 80°F
- 85° to 135°F 110°F
- 100° to 150°F 130°F
- Special _____ _____



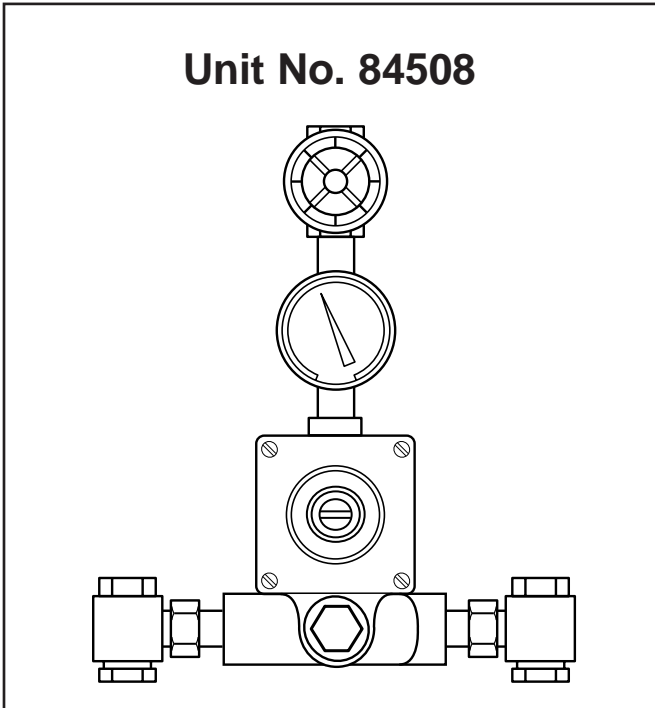
MANUFACTURING CO., INC.

5330 East 25th Street
Indianapolis, Indiana 46218
Phone (317) 261-1212
Fax (317) 261-1208
www.lawlervalve.com

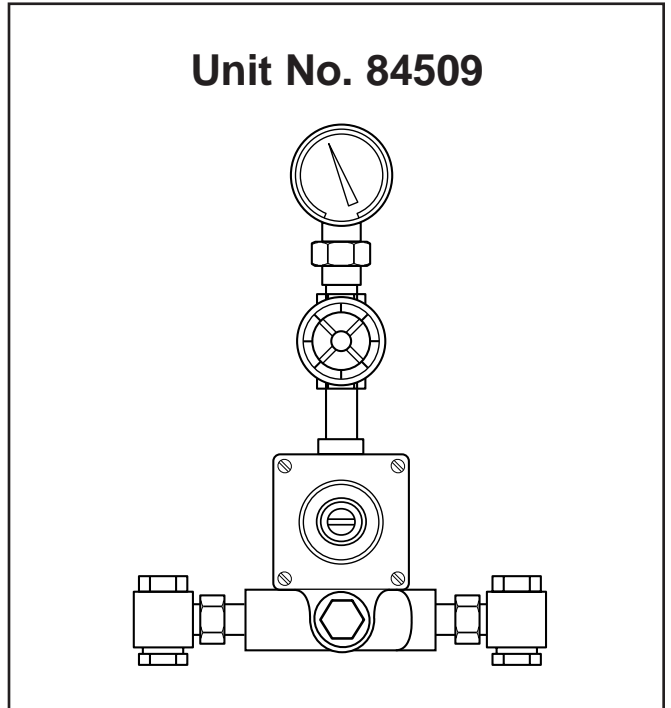
PACKAGED PIPED AND CABINET ASSEMBLIES

Consult the factory or our representative in your area for a complete package of specification sheets.

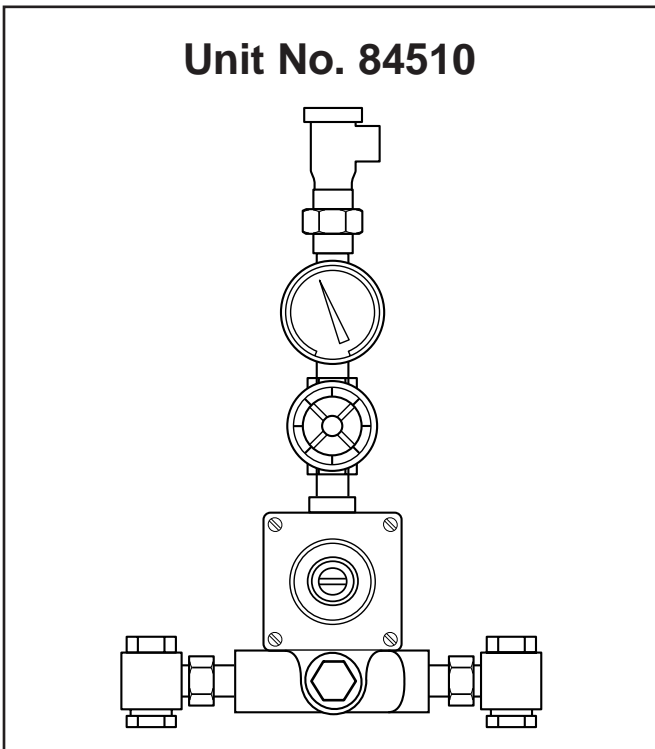
Unit No. 84508



Unit No. 84509



Unit No. 84510



Unit No. 84511

