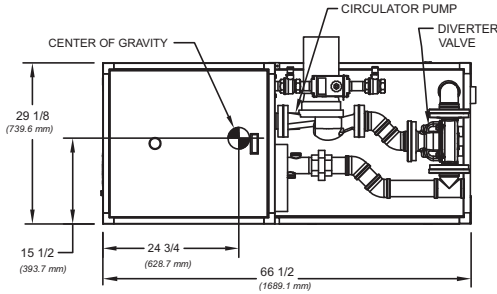


**CODE OPTIONS**

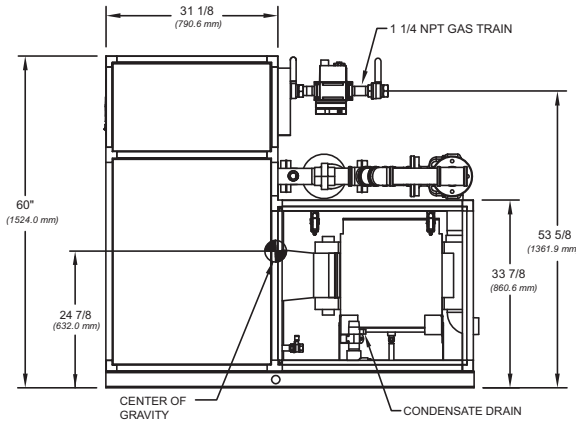
<b>CSD-1</b>	Manual Reset LWCO
<b>Kentucky</b>	200° F Maximum Operating Control and High Limit

**NOTE:** Dimensions are approximate and should not be used to "rough-in" equipment.

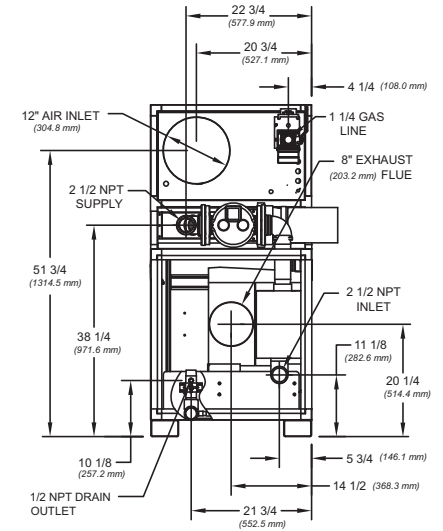
\* Includes pump  
 \*\* For incoming gas pressures lower than 2" W.C. natural or propane, consult factory.



**TOP VIEW**



**SIDE VIEW**



**BACK VIEW**

RSUB 100 REV. C

**A.G.A. CERTIFIED RATINGS & CAPACITIES**

<b>Fuel Type</b>	Natural/Propane Gas	<b>Total FLA</b>	19*
<b>Input BTU/hr.</b>	1,500,000 / 440 kW	<b>Min. Gas Pressure Required</b>	2" W.C.**
<b>Output BTU/hr.</b>	1,440,000 / 422 kW	<b>Max. Gas Pressure Allowed</b>	14" W.C.
<b>Electrical Requirements</b>	(L1,L2,NEU,GND) 208-240VAC/1 ph/60 hz	<b>Operating Weight</b>	905 lbs. / 411 kg.

**TEMPERATURE RISE / PRESSURE DROP**

25° F / 13.9° C		30° F / 16.7° C	
Flow Rate	Total Loss***	Flow Rate	Total Loss***
GPM L/s	Ft kPa	GPM L/s	Ft kPa
104.4 6.6	11.6 34.7	87.0 5.5	8.5 25.4

\*\*\*Includes primary, secondary, mixing valve and piping.

**BOILER TRIM & CONTROLS**

<b>Main Gas Valve</b>	Dungs DMV-SE512/11	<b>Manual Pilot Valve</b>	Honeywell V8046C
<b>Firing Valve</b>	Honeywell B200T1041 1 1/4"	<b>Air Switch</b>	Cleveland RSS-495
<b>Ignition Control</b>	Honeywell RM7895C	<b>Blower Motor</b>	Fasco 1 hp
<b>Operating Control</b>	HeatNet™	<b>Relief Valve - CW</b>	3/4" x 3/4" set @ 125 psi
<b>High Limit</b>	Jumo	<b>Relief Valve - CB</b>	1" x 1 1/4" set @ 50 psi
<b>Main Ball Valve</b>	1 1/4"	<b>Flow Switch</b>	IFS-1
<b>Pilot Cock</b>	1/4" Honeywell B528	<b>Solenoid Valve w/ Reg</b>	CV100
<b>Economizer</b>	RBI-1500	<b>Circulator</b>	TACO 1935 (1 hp) - FLA 14
<b>Mixing Valve</b>	2 1/2"	<b>By-Pass Piping</b>	2 1/2"

**A.S.M.E.**

<b>ASME Sect IV Htg Surface</b>	161.16 Sq. Ft. / 14.97 Sq. M.	<b>Design Data</b>	Max. 160 psig & 250° F
<b>Water Volume</b>	5 gal. / 18.93 l (liters)	<b>Secondary Heat Exchanger</b>	125 psi
<b>Water Volume Secondary HX</b>	5.96 gal. / 22.56 l (liters)		

**RECOVERY CAPACITY**

40°F	22° C	60°F	33° C	80°F	44° C	100°F	56° C	120°F	67° C	140°F	78° C
4322	16,360	2881	10,906	2161	8180	1729	6544	1441	5453	1235	4674

<b>REP FIRM</b>	_____	<p><b>FUTERA FUSION 1500</b></p> <p>Category IV Appliance</p> <p>(see Installation and Operation Manual for venting information)</p> <p><b>RBI</b>® A Division of Mestek, Inc.                  Westfield, MA 01085                  (413) 568-9571</p>
<b>SUBMITTED BY</b>	_____	
<b>JOB NAME</b>	_____	
<b>ARCHITECT</b>	_____	
<b>ENGINEER</b>	_____	
<b>CONTRACTOR</b>	_____	
<b>DATE</b>	_____	

SFTF-1500-3